



## **PSLRF Laser Rangefinder**

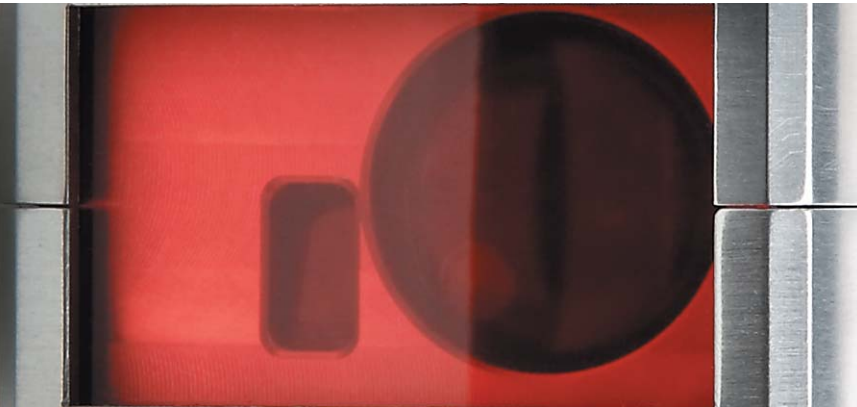
The new EOS PSLRF Laser Rangefinder is the latest development in the LRF product family of EOS. This LRF is a compact sensor device which can be flexibly adapted to meet customer's requirements.

Main applications are in industrial automation where a compact, low power consumption (battery operation is possible) ranging system is required.

PSLRF provides longlasting reliable operation with cm accuracy

### **In order to suit each application, EOS offers customized features such as:**

- Interface  
(like Profibus, CANopen, Ethernet, RS232)
- Laser wavelength (infrared, visible)
- Ranging distance (1 – 10 m)
- measurement rate (up to a few kHz)
- Resolution and accuracy (mm - cm)



Laser Rangefinder

## Technical Specifications

<b>Range (unambiguous)</b>	2.5 m
<b>Wavelength:</b>	655 nm
<b>Laser safety:</b>	eye safe, Laser class 2 ( $< 1$ mW average output power)
<b>Power consumption:</b>	5 V / 275 mA
<b>Temperature range:</b>	-20 °C to +70 °C
<b>Interface:</b>	RS232 (optional: CANopen, Profibus, Ethernet)
<b>Weight:</b>	224 gr
<b>Dimensions (mm):</b>	95 x 55 x 32

Measurement rate	Repeatability (3 sigma)
1 kHz	11 mm
100 Hz	4 mm
10 Hz	1 mm

### Contact

EOS Optronics GmbH ▪ Ulrichsberger Str. 17  
94469 Deggendorf - Germany  
Telefon +49 991 344 788-0 ▪ Telefax +49 991 344 788-129  
[info@eos-optronics.com](mailto:info@eos-optronics.com) ▪ [www.eos-optronics.com](http://www.eos-optronics.com)